



**RER**



# RER SERIES

**REDEFINING  
SUSTAINABLE  
ENERGY EFFICIENCY...**



**BOUSQUET**

# HIGH EFFICIENCY RECOVERY UNIT

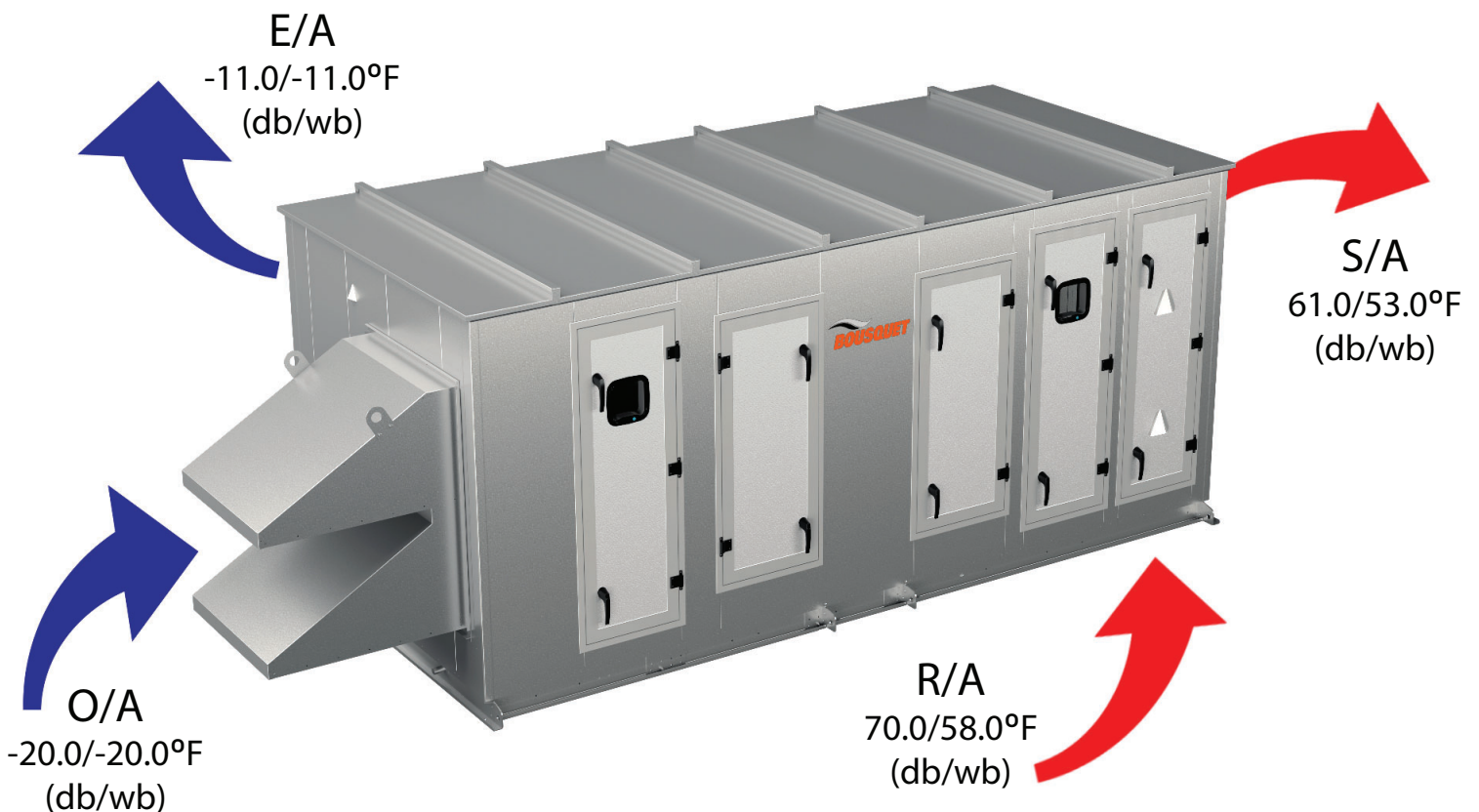
## RER SERIES ADVANTAGES

- Readily available (short production cycle) units
- No heating source required
- Significant reduction in CO<sub>2</sub> emissions
- Reduced operating costs
- Reduced cooling and humidification loads
- Fully operable down to an outside air temperature of -40°F/C without the need of a defrost cycle
- Industry leading energy recovery effectiveness

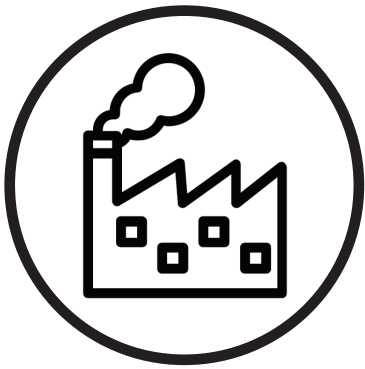
**90%**  
sensible  
recovery  
efficiency

**87%**  
latent  
recovery  
efficiency

**89%**  
total  
recovery  
efficiency



# YOUR IDEAL SOLUTION FOR



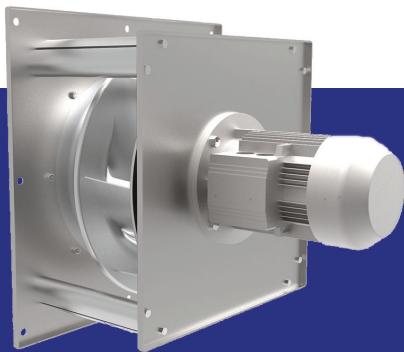
MANUFACTURING  
FACILITIES



WAREHOUSES &  
STORAGE FACILITIES



LIGHT COMMERCIAL  
APPLICATIONS



## DIRECT DRIVE FAN ARRAY

- Direct drive plenum fans w/ VFD for easy maintenance and adjustments
- Fully compatible w/ VAV applications



## SUPERBLOCK ENERGY RECOVERY

- Peak efficiencies of up to 92% sensible and 89% latent
- High efficiency aluminum core w/ optional 3Å desiccant coating for summer latent recovery

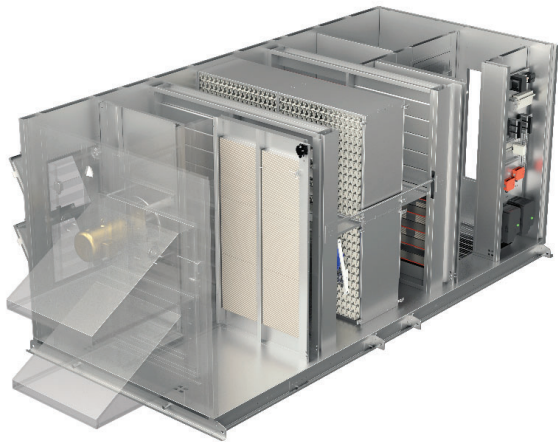


## THERMAL BREAK CONSTRUCTION

- Gasketed thermal break cabinet construction
- Thermally broken premium access doors with LED equipped viewports

# RER

## REVERSE FLOW REGENERATIVE ENERGY RECUPERATOR (RER)



- 3,000 to 18,000 CFM (9 models/sizes)
- Indoor or outdoor installation
- Single-side access configuration
- Horizontal or vertical supply air opening
- 2 in. double-wall construction with R8 Insulation
- Galvanized steel exterior finish
- 2 in. MERV-8 pre-filters on both O/A and R/A
- Optional 4 in. MERV-14 filters available
- Digital controller (DDC) w/ BACnet protocol for control and monitoring
- Available for 575-460-208/3/60 voltages
- Ideal for new construction or retrofit projects
- No field assembly required

## SUSTAINABLE BUILDING DESIGN IS JUST A FEW CLICKS AWAY!

Bousquet Technologies  
2121 rue Nobel  
Sainte-Julie (Quebec) J3E 1Z9

1-800-363-9197  
bousquet.ca

**BOUSQUET**