



**BOUSQUET**



**RER+ SERIES  
SEMI-CUSTOM  
DOAS UNITS**

**ELEVATE YOUR DEDICATED  
OUTDOOR AIR SYSTEMS  
TO THE NEXT LEVEL...**



**90%**

**sensible**  
recovery  
efficiency

**87%**

**latent**  
recovery  
efficiency

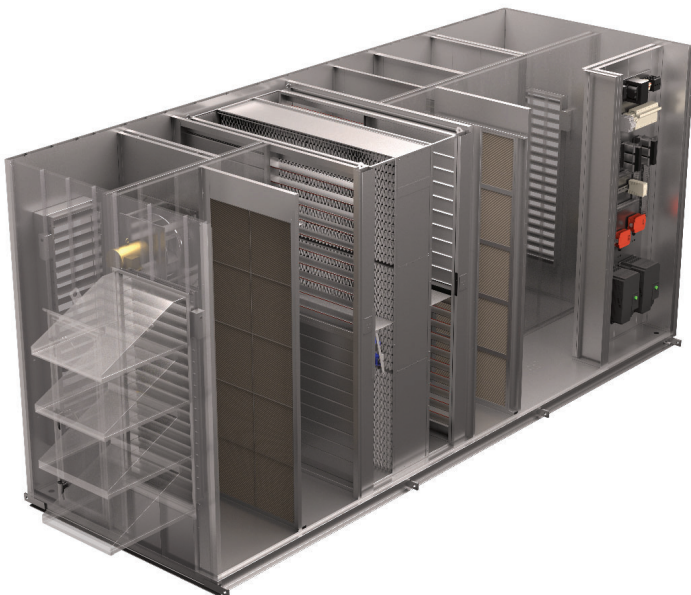
**89%**

**total**  
recovery  
efficiency

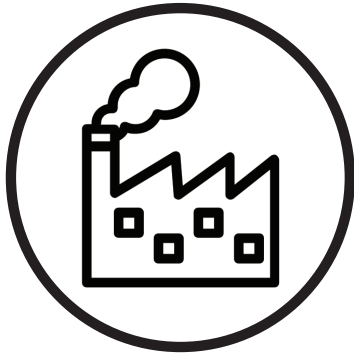
# BEST-IN-CLASS ENERGY RECOVERY...

## RER+ SERIES ADVANTAGES

- Significant reduction in CO<sub>2</sub> emissions
- Reduced operating costs & power consumption
- Reduced cooling and humidification loads
- Fully operable down to an outside air temperature of -40°F/C
- VRV/VRF integration for optimal energy efficiency & payback



# YOUR IDEAL SOLUTION FOR



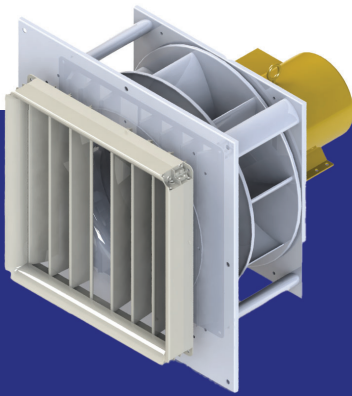
**MANUFACTURING  
FACILITIES**



**EDUCATIONAL  
INSTITUTIONS**



**LONG TERM  
HEALTHCARE**



## **DIRECT DRIVE FAN ARRAY**

- Direct drive plenum fan arrays equipped w/ VFDs
- Available w/ optional backdraft isolation dampers
- Fully compatible w/ VAV applications



## **SUPERBLOCK ENERGY RECOVERY**

- Peak efficiencies of up to 95% sensible and 89% latent
- High efficiency aluminum core w/ optional 3Å desiccant coating for summer latent recovery



## **HEATING & COOLING SOURCES**

- Optional HW Coil, VRF Coil (DX) or Electric Coil for heating mode
- CW Coil, VRF Coil (DX) available as optional cooling mode sources

# HIGH EFFICIENCY SEMI-CUSTOM ENERGY RECOVERY UNITS (RER+ SERIES)

- Airflow ranging from 2,000 to 20,000 CFM (optimized @ 1,000 CFM increments)
- Indoor or outdoor installation
- Embossed aluminium or galvanized steel exterior finish
- Single-side or dual-side access configuration
- Gasketed thermally broken cabinet construction
- Thermally broken access doors with optional LED equipped viewports
- 2 in. urethane foam board insulation
- Optional fan backdraft isolation dampers
- Optional HW coil or VRF coil for heating
- Optional CW coil or VRF coil for cooling
- Digital controller (DDC) w/ BACnet protocol for control and monitoring

